

JACKSON'S ARTIST ACRYLIC COLOUR

Our stunning range of acrylics are a heavy-medium body paint that thins out beautifully and mixes well with other brands.

These beautiful colours are formulated with 100% maximum performance acrylic resin and the highest quality lightfast pigments.

The colours offer incredible intensity and strength and have a consistency perfect for brushing out flat, yet will retain their structure for impasto work.

They can be mixed with any other brand of acrylic or acrylic medium and can be applied to most grounds.

An affordable acrylic suitable for professional painters and serious amateurs alike.

KEY

Series

Price bands no. ① - ⑨

Pigment index

Colour index name
for example PW6

Lightfastness

☼ Fugitive

☼ Fair

☼ Good

☼ Excellent

Transparency

○ Transparent

◐ Semi Transparent

◑ Semi Opaque

● Opaque



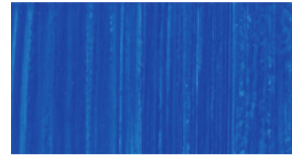
201 - Titanium White
① PW6 ☼ ●



223 - Cadmium Red Genuine
④ PR108 ☼ ●



239 - Violet
③ PV23 ☼ ◐



260 - Cerulean Blue Hue
② P[02] ☼ ●



292 - Burnt Sienna
① PBr7 ☼ ●



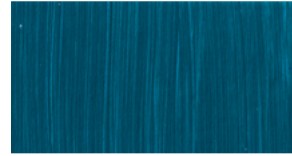
208 - Primrose Yellow
④ PY53 ☼ ●



224 - Cadmium Red Hue
② PR112 ☼ ◐



240 - Ultramarine Violet Hue
③ PB29 PB15:3 PW6 ☼ ◐



270 - Turquoise
② PB15:3 PG7 PW6 ☼ ◐



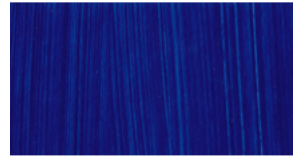
294 - Mars Brown
① PR101 ☼ ●



210 - Cadmium Yellow Pale Genuine
③ PY35 ☼ ●



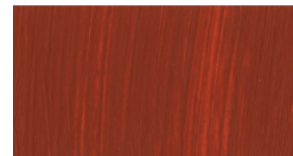
231 - Cadmium Red Deep Genuine
③ PR108 ☼ ●



242 - Phthalo Blue (Red Shade)
② PB15:1 ☼ ○



273 - Oxide of Chromium
③ PG17 ☼ ●



296 - Venetian Red
① PR101 ☼ ●



211 - Yellow Lemon
② PY3 ☼ ◐



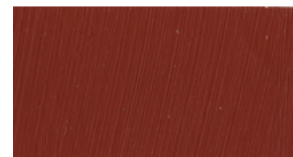
234 - Crimson
③ PR112 PR122 ☼ ◐



243 - Phthalo Blue (Green Shade)
② PB15:3 ☼ ○



272 - Emerald Green
② PY3 PG7 ☼ ◐



312 - Indian Red
① PR101 ☼ ●



214 - Cadmium Yellow Medium Hue
② PY73 ☼ ◐



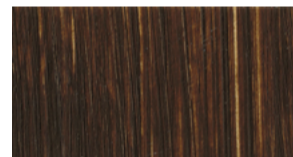
236 - Alizarin Crimson
② PR112 PR12 ☼ ◐



249 - French Ultramarine Blue
① PB29 ☼ ○



274 - Phthalo Green
② PG7 ☼ ◐



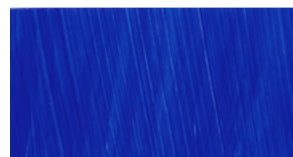
320 - Raw Umber
① PBr7 ☼ ○



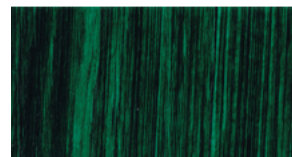
213 - Cadmium Yellow Genuine
③ PY35 ☼ ●



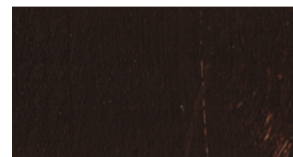
237 - Magenta
④ PR122 ☼ ◐



253 - Cobalt Blue Genuine
④ PB28 ☼ ●



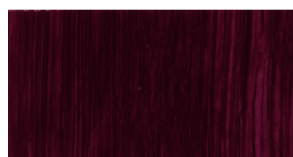
278 - Hooker's Green
② PG7 PBk7 ☼ ◐



326 - Burnt Umber
① PBr7 ☼ ◐



216 - Cadmium Yellow Deep Genuine
③ PY35 ☼ ●



235 - Naphthol Red
② PR12 ☼ ●



252 - Cobalt Blue Hue
② P[01] ☼ ●



286 - Yellow Ochre
① PY42 ☼ ●



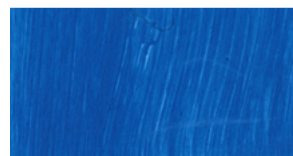
340 - Payne's Grey
② PB29 PBr7 PBk7 ☼ ◐



220 - Cadmium Orange Genuine
③ P020 ☼ ●



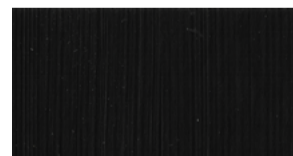
238 - Rose Madder Quinacridone
③ PV19 ☼ ◐



261 - Cerulean Blue Genuine
① PB36 ☼ ●



290 - Raw Sienna
① PBr7 ☼ ○



352 - Black
① PBk11 PBk7 ☼ ●



221 - Orange Red
③ P05 ☼ ◐