

JACKSON'S PROFESSIONAL OIL COLOUR

Jackson's Professional Oil Paints are made by skilled artisans, using only the finest grade pigments and the purest refined oils to create colours that are rich and vibrant.

The intense colour saturation and purity of this range is achieved by high pigment loading coupled with our traditional production process.



202 · Titanium White (Linseed)
① PW6 PW4 ④ ●



203 · Titanium White (Safflower)
① PW6 PW4 ④ ●



205 · Zinc White
① PW4 PW6 ④ ●



206 · Unbleach. Titanium White
① PW6.1 ④ ●



216 · Cadmium Yellow Lemon
④ PY35 ④ ●



224 · Bright Yellow Lake
① PY3 ④ ①



234 · Cadmium Yellow Genuine
④ PY35 ④ ●



241 · Yellow Lake
② PY73 ④ ○



256 · Cadmium Yellow Deep Gen.
④ PY35 ④ ●



262 · Indian Yellow Hue
② PY83 ☼ ○



269 · Cadmium Orange
④ P020 ④ ●



275 · Cadmium Red Light Gen.
④ PR108 ④ ●



279 · Cadmium Red Genuine
④ PR108 ④ ●



286 · Naphthol Vermillion
③ PR188 ☼ ●



292 · Cadmium Red Deep Gen.
④ PR108 ④ ●



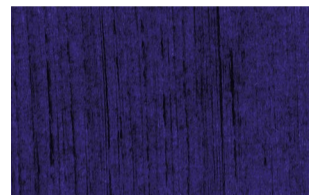
525 · Brilliant Pink
② P[04] ④ ●



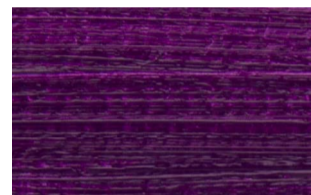
304 · Alizarin Crimson
③ PR83 ☼ ○



317 · Quinacridone Magenta
③ PR122 ④ ①



333 · Violet Dioxazine
③ PV23 ④ ●



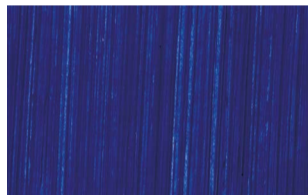
670 · Manganese Violet
③ PV16 ④ ●



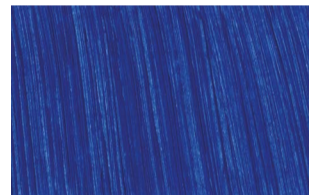
335 · Ultramarine Violet
② PV15 ④ ①



342 · Phthalo Blue
② PB15:3 ④ ●



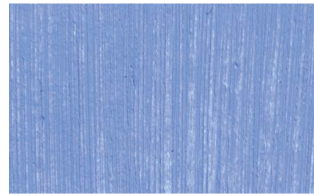
350 · Ultramarine Blue (RS)
① PB29 ④ ①



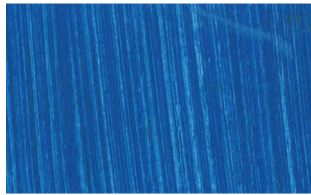
362 · Cobalt Blue Genuine
⑤ PB28 ④ ●



544 · King's Blue Deep
② PB29 PW6 PW4 ④ ●



371 · Kings Blue Light
② PB29 PW6 PW4 ④ ●



370 · Cerulean Blue Genuine
⑤ PB35 ④ ●



377 · Prussian Blue
① PB27 ④ ●



674 · Indigo
② PB15:3 PBk7 PV19 ④ ●



391 · Phthalo Green
② PG7 ④ ●



678 · Emerald Green
② PG7 PY3 PW6 PW4 ④ ●



384 · Chrome Oxide Green
③ PG17 ④ ●



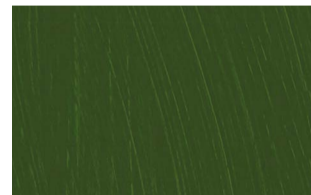
393 · Phthalo Turquoise
② PG7 PB15:3 PW4 PW6 ④ ●



398 · Terre Verte
① PG23 ④ ○



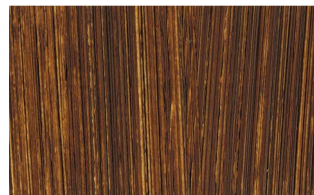
395 · Viridian Green
④ PG18 ④ ①



512 · Sap Green
② PY3 PG7 PB7 ④ ●



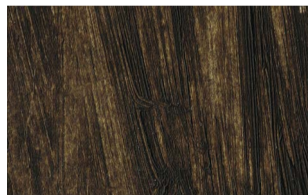
404 · Yellow Ochre
① PY42 ④ ●



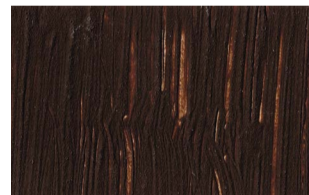
410 · Raw Sienna
① PBr7 ④ ●



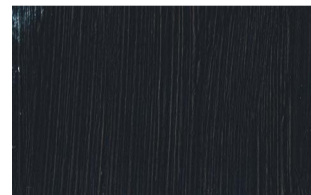
422 · Burnt Sienna
① PBr7 ④ ●



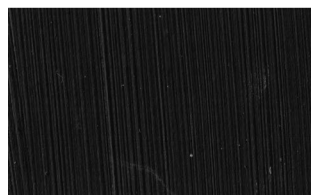
428 · Raw Umber
① PBr7 ④ ●



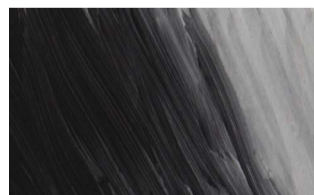
430 · Burnt Umber
① PBr7 ④ ●



434 · Payne's Grey
① PB29 PBk9 PY42 ④ ●



440 · Ivory Black
① PBk9 ④ ●



671 · Lamp Black
① PBk6 ④ ●

KEY

Series

Price bands no. ①-⑤

Pigment index

Colour index name for example PW6

Lightfastness

- ☼ Fugitive
- ☼ Fair
- ③ Good
- ④ Excellent

Transparency

- Transparent
- ① Semi Transparent
- Semi Opaque
- Opaque

Extended pigment index

P[01]: PY42 PV19 PW6 PW4
P[02]: PY3 PB29 PB15:3 PW6
P[03]: PY3 PY73 PB15:3 PW6
P[04]: PW4 PW6 PR188 PR209